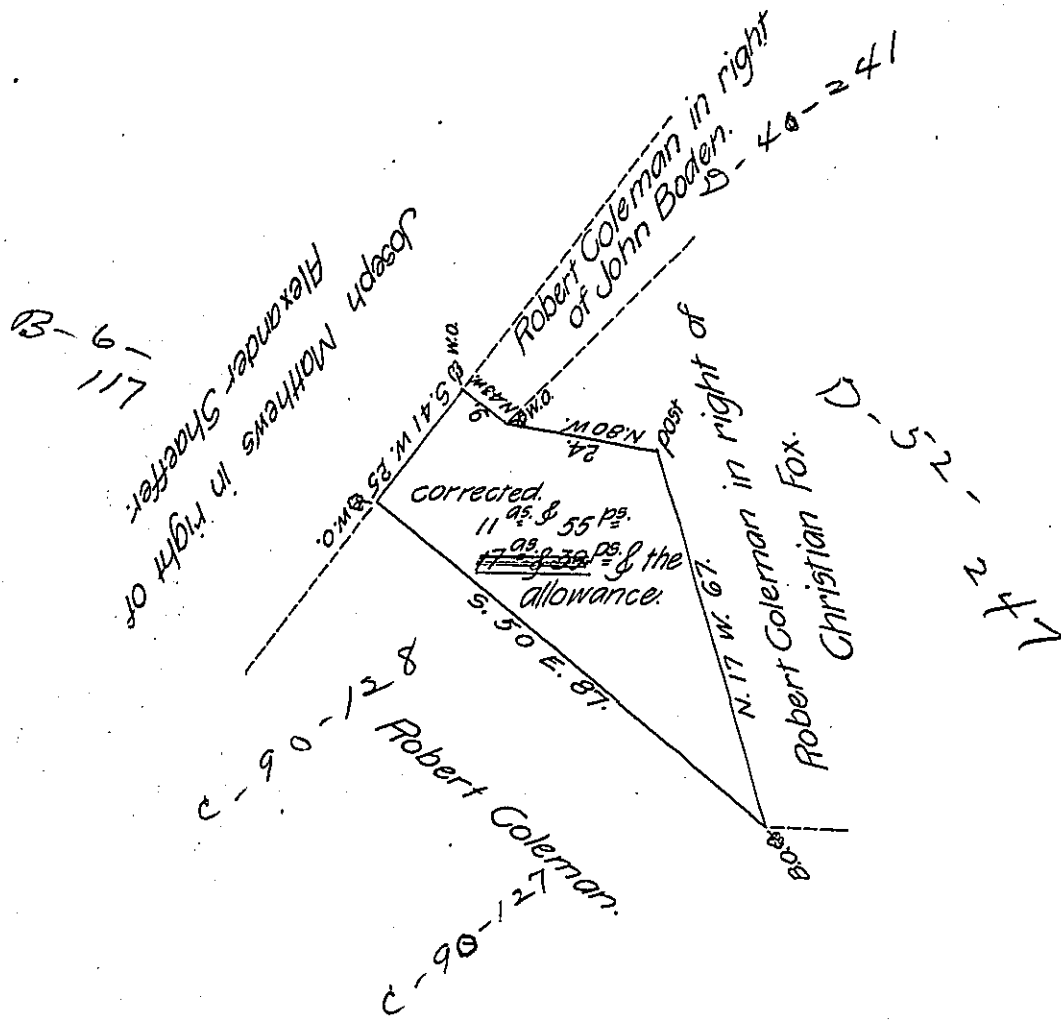


See pag. 105 & 111
C-29-49



A draught of land situate in Elizabeth Township, Lancaster County, containing ~~seventeen~~ ^{eleven} Acres and ~~thirty nine~~ ^{fifty five} perches & the usual Allowance of six per cent for roads, &c. Surveyed the 3^d of May, 1819 (in pursuance of an Application dated the 23^d day of November, Anno Domini, 1767, granted to Peter Mittle, &c.) for Robert Coleman, Esq^r.

N^o 2989

pr.

Jacob Hibshman, D.S.

I approve of the above survey to be accepted in the Surveyor General's Office. December 1st, 1823.

Henry Carpenter, D.S.

To Samuel Cochran, Esq^r.
Surveyor General.

IN TESTIMONY that the above is a copy of the original remaining on file in the Department of Internal Affairs of Pennsylvania, made conformably to an Act of Assembly approved the 16th day of February, 1833, I have hereunto set my Hand and caused the Seal of said Department to be affixed at Harrisburg, this First day of June, 1908.

Henry Howard
Secretary of Internal Affairs.